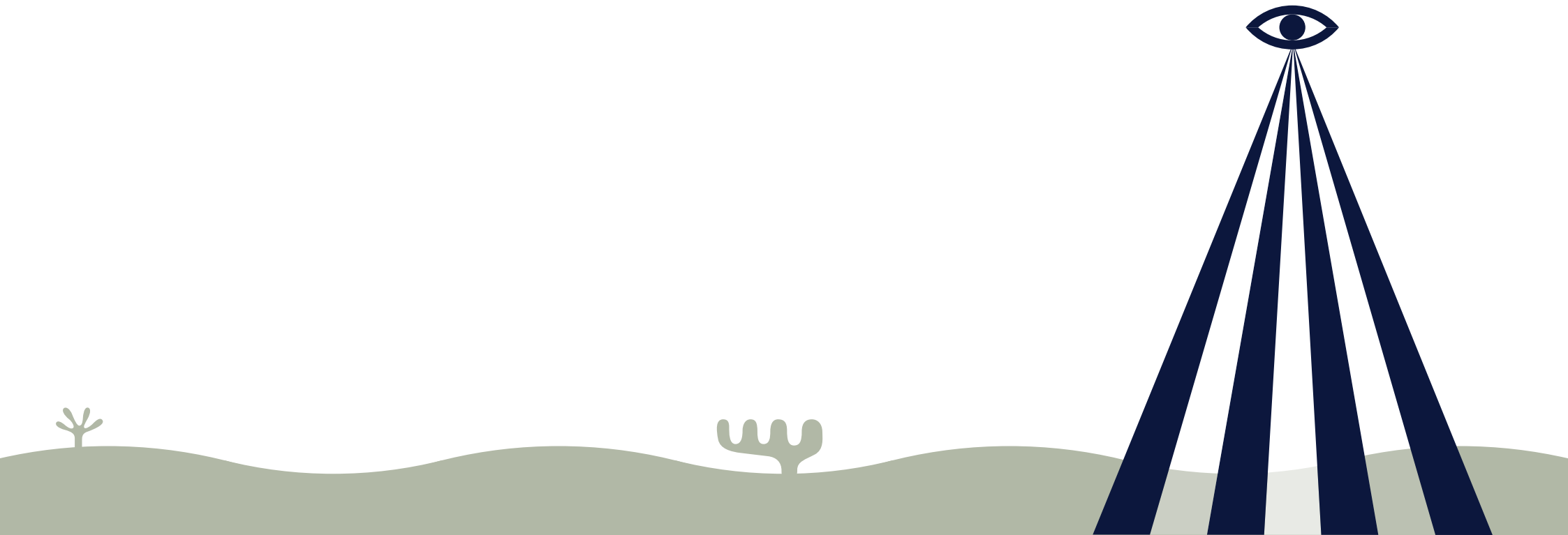


Clockenflap™

2018 ARTS OPEN CALL

THEME: **SENSORIA**



History

Clockenflap is Hong Kong's largest and longest-running outdoor music and arts festival, and a major highlight of the city's annual cultural calendar. Launched in 2008 by friends and co-founders Mike Hill (Festival Director), Justin Sweeting (Music Director) and Jay Hofmann-Forster (Artistic Director), Clockenflap has grown from an intimate one-day gathering of 1,500 local music and arts lovers, to a three-day cultural extravaganza with an expected audience of 80,000 in 2018.

Artistic Direction

Clockenflap's arts program spans the entire festival site, with works ranging from; large format installations, kinetic sculpture, immersive experiences, and mobile performances.

Nurturing and magnifying home grown talent upon an internationally acclaimed platform, the festival format serves as one giant canvas; with the power to transform and inspire.



Open Call & Theme

Each year, Clockenflap's curatorial team determines a theme to anchor and inspire the arts program:

SENSORIA

- **The total sensory apparatus of an organism.**
- **A structure or place that stimulates all five senses**

Sensoria: The totality of those parts of the brain that receive, process and interpret sensory stimuli. The sensoria is the supposed seat of sensation, the place to which impressions from the external world are conveyed and perceived.

The term "sensoria" comes (as does the word "sensation") from the Latin sensus, "the faculty of perceiving."



Submissions

The Clockenflap curatorial team would like to invite proposals which respond to our theme SENSORIA for this year's Visual Arts Program. The three-day festival will take place from the 9th – 11th November 2018.

Clockenflap supports projects of up to HK\$65,000. Apply for one or more of these two budget categories :

HK\$35,000

HK\$65,000

Key Dates

Open Call Announced: Monday 11th June 2018

Submission Deadline: Monday 23rd July 2018

Results Announced: Tuesday 31st July 2018

How to apply

Please email submissions to: jay.forster@magneticasia.com, or by post to Jay Hofmann-Forster at Magnetic Asia Ltd. Unit 3, 13/F, Remex Centre, 42 Wong Chuk Hang Road, Hong Kong. For any other enquiries: arts@clockenflap.com

Judging Criteria

Proposals will be judged on the following criteria: creative response to our theme, audience engagement, optimistic tone, viability, safety, and budget.

Requirements

- Name of organization or individual. (Contributor)
- 100 words or less overview of the concept and design.
- Sketch, design and/or rendering of proposed design to include scale, materials, and technical details.
- Provide reference images and/or examples of previous work for consideration.
- Provide detailed budget plan, to include all associated costs and expenses.

Expenses

Description	Amount (HKD)
Production costs (materials/construction/equipment):	_____
Staffing:	_____
Transport and delivery:	_____
Insurance:	_____
Others:	_____
Total: Amount (HKD)	_____



Guidelines

Outdoor Festival Environment:

Please be mindful that Clockenflap is an outdoor music and arts festival, with an expected audience of 80,000 people. Designs should be robust, safe and weatherproof.

Environmentally Conscious:

Please be mindful of the material choice and fabrication processes. Clockenflap aims to reduce waste wherever possible, and if a second home for the Art Work can be found, we fully support this.

Scale:

Designs which occupy a volume anywhere between 8m^3 and 100m^3 are welcome, though please be mindful of construction costs. We DO NOT have contingency budgets, and it is critical to adhere to the allocated budget.

Height Restrictions:

There are no height restrictions as such, however structures below 2.4m are much easier to get sign off from the Building's Department.

Integration of lighting:

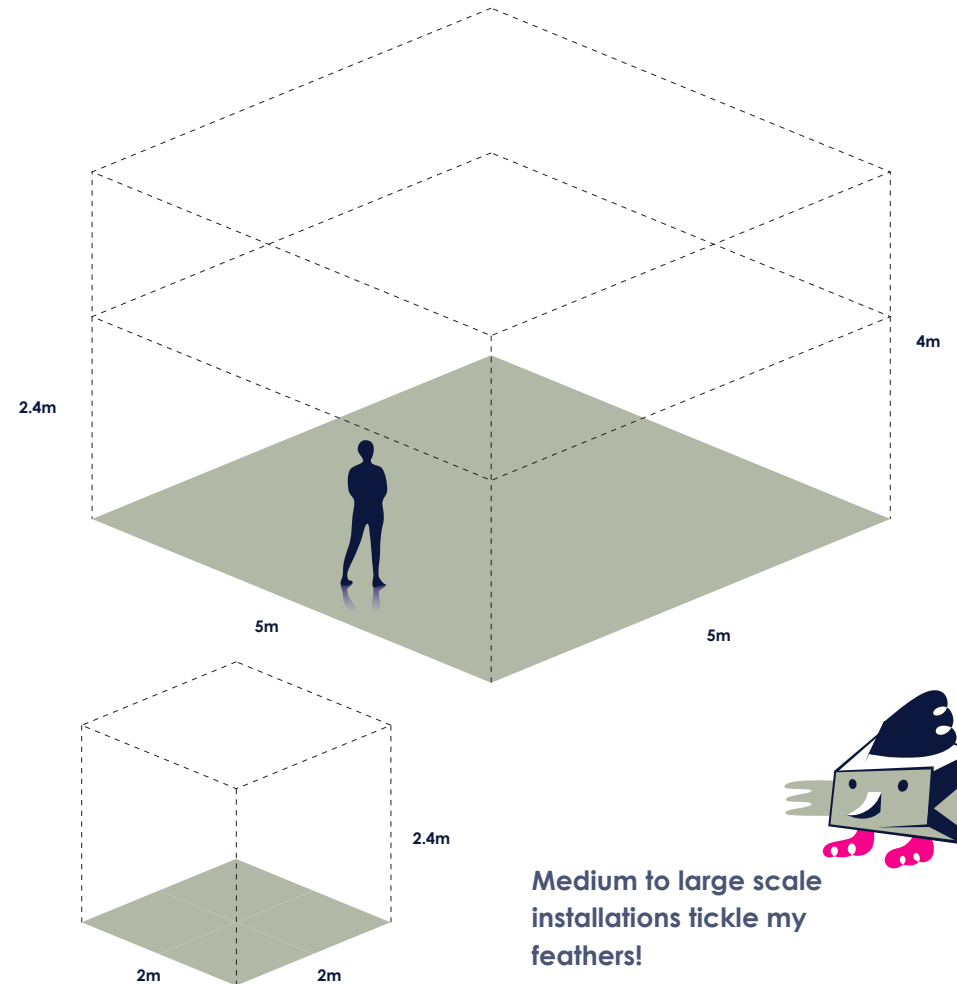
Lighting can be an integral component of the Art Work - and will radically enhance the work after dark. We do provide external RGB PAR lighting, however these have limited control features.

Ballast:

Ballast in the form of concrete blocks or sandbags will almost certainly be needed. Please factor this into your design.

Clockenflap Expertise:

We are here to help! Please feel free to contact us should you wish to discuss any matters related to the project.



Responsibilities

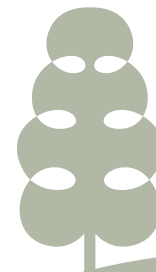
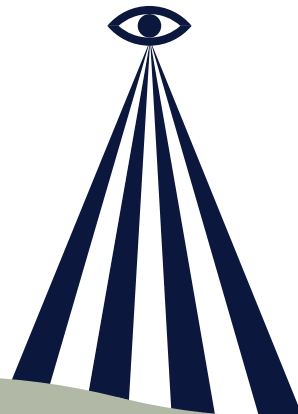
- Create an Art Work according to the specifications presented and mutually agreed to.
- Work within a space of maximum 25 square meters – final space allocation to be discussed and mutually agreed to.
- Unless Clockenflap has agreed to provide volunteers to the Contributor, please provide responsible staff to standby the Art Work during the festival: to be discussed.
- Be fully responsible for the installation, dismantle, and removal of the Art Work.
- During the festival, the contributor is responsible for protecting their own items from water damage, lost or being stolen.
- Provide the necessary insurance, as specified below.
- Adhere to the Schedule Overview and the Safety Requirements outlined below.
- Sign the Clockenflap Contributor Services Agreement once the Art Work is approved by Clockenflap.
- Update the curatorial team at agreed times on progress.
- Co-draft information to be included within the festival program.
- Liaise with the media and take part in interviews when requested by Clockenflap.

Provisions

- The overall theme of 'SENSORIA' and associated text and images as reference.
- Creative and technical feedback on proposed Art Work.
- One 16 AMP outdoor electrical socket
- Ambient/surface light, and power for the Art Work.
- By Hong Kong law, any item(s) over 2.4m high, will need to be certified by a Registered Structural Engineer. If the Art Work has satisfied the technical and safety requirements, Clockenflap agrees to cover the RSE certificate cost.
- Fireproofing and certification.

Benefits

- Exposure to 80,000 festival visitors
- Recognition within Clockenflap marketing and PR materials
- Inclusion within the festival website and festival app.
- 4 x Full Weekend Festival Passes per installation – additional passes subject to approval.



Schedule

PHASE ONE – PRE-FESTIVAL

Tuesday 31st July

Results Announced

Tuesday 2nd August

Kick off meeting with winning artist/team and Clockenflap

Ongoing discussions and design updates

Monday 6th August

Deadline for submission of Contributor's Chinese and English biography (100-200 words) and profile pictures

Monday 13 August

Deadline for submission of accurate technical drawing for RSE calculation by Clockenflap (over 2.4m)

Monday 3rd September

Deadline for submission of accurate technical drawing for RSE calculation by Clockenflap (between 1.7m - 2.4m)

Monday 10th September

Submission deadline of fire certificates

PHASE TWO - ONSITE

Monday 5th November

Load in, commence installation at festival site

Thursday 8th November

Complete installation

Friday-Sunday 9-11th November

Festival commences

Monday 12th November

Dismantle



Technical and Safety

- All Art Works must be designed and constructed to withstand environmental factors such as wind and rain. (technical support will be provided)
- All Art Works must be designed and constructed with consideration for the festival attendees. Please be mindful of the volume of visitors to the Art Work and possible rough treatment.
- Materials provided by artists must conform to the Hong Kong Fire Services Department regulations. All testing of materials should be covered at the Contributors own cost. Certification or proof of fire safety will be required and must be provided after signature of Artist Services Agreement.
- Artists should be aware that venue regulations are strict and non-negotiable.
- All combustible material, decorative material (such as drapes & textiles), marquee and stage coverings and PU foam filled furniture must conform to the relevant British Standard (BS) requested at the time of application by the Fire Services Department (FSD). Such approval will also, in some circumstances, include the installation by a Registered Fire Services Installation Contractor.
- Clockenflap will notify the Contributor(s) of the Standard required and the timing of submission for specific materials. It is the Contributor's sole responsibility to submit on time, true and correct documentation to prove compliance.
- Blocking Emergency Vehicular Access (EVA) at any time is strictly prohibited.
- Enclosed spaces should have an exit with a minimum of 2m width.

Fire Regulations

Marquee (or similar type structure) (for 4 sided enclosed structures only)
BS7837:1996
NFPA701

Wall Panel (vinyl): BS476:part 7 Class 1 or 2

Textile/Drape : BS5867:part 2 (test with BS5438)

PU Foam in Mattresses: BS7177

PU Foam in Furniture: BS7176

Inflatables: EN71-2:201

Insurance

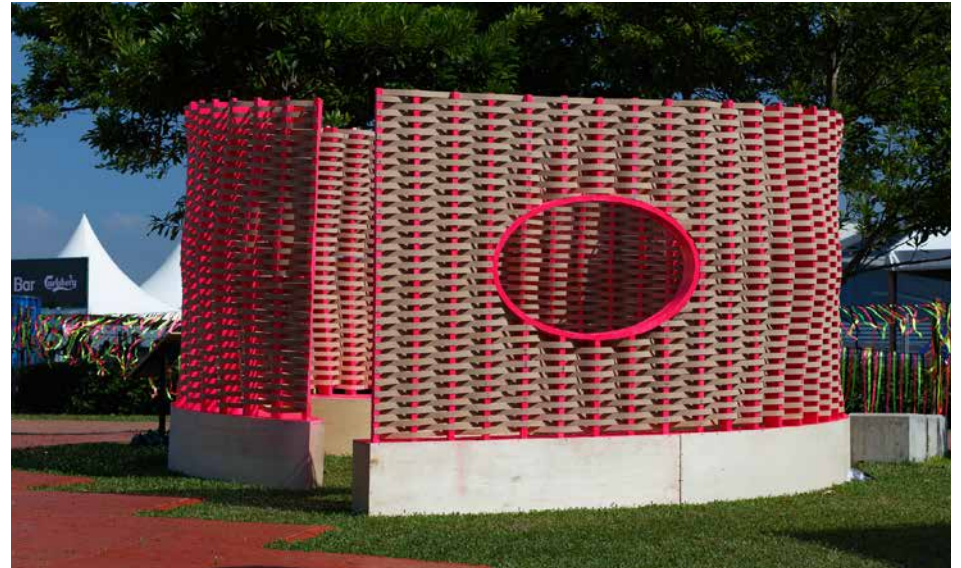
The Contributor(s) must hold an appropriate Third Party Public Liability insurance policy throughout the occupation period. The venue sets a limit of \$30,000,000HKD, and it is the event organiser's recommendation that the Contributor(s) limit should match this, to provide sufficient cover in the event of a claim. Proof will be required before the onsite period.

Contributor(s) must hold an appropriate Contractors All Risk Insurance (CARI) throughout the occupation period. The venue sets a limit of \$30,000,000HKD, and it is the event organiser's recommendation that the contributor(s) limit should match this, to provide sufficient cover in the event of a claim. Proof will be required before the onsite period.

Contributor(s) must hold appropriate Employee Compensation Insurance (ECI) or Group Personal Accident Insurance for all their staff and crew working onsite. Proof will be required before the onsite period. Insurance should be covered within the budget.

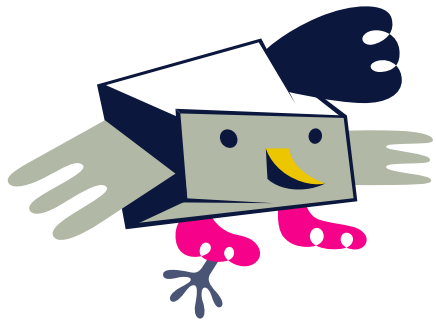


CLOCKENFLAP ARTS PAST REFERENCES



CLOCKENFLAP ARTS PAST REFERENCES





Thank you

